

SOULE, BLAKE & WECHSLER

Manufacturer of Custom Engineered Components

- ◆ Stamping
- ◆ Casting
- ◆ Forging
- ◆ Welding
- ◆ Wire Forms
- ◆ Tube Bending
- ◆ Machined Parts
- ◆ Injection Molding
- ◆ Powder Coated Metal
- ◆ Multi-Component Assemblies



Soule, Blake and Wechsler, inc. (SB&W) was incorporated in 1983 as a import company specializing in fasteners with initial ties to companies from Japan, Korea, Taiwan and China. Driven by our customers demand in the early 1990's for importing non-fastener items, the company started to evolve as a components manufacturer. SB&W established their first joint venture in Beijing China in 1994 as a hedge to the expansion of manufacturing in China. Our second joint venture was established in 2004 with a company from Hangzhou China. As a result of the tremendous growth we generated over the past 6 years, we established a new 400,000 square foot manufacturing facility in Hangzhou, China.



Hangzhou Facility
Established May 2004



Soule, Blake & Wechsler
Stamford, CT USA



Beijing Facility
Established June 1994

Soule, Blake and Wechsler, Inc : 180 Harvard Avenue : Stamford, CT 06902 : USA : 1-800-450-4679
www.sbwusa.com : sales@sbwusa.com



Manufacturer of Custom Engineered Components

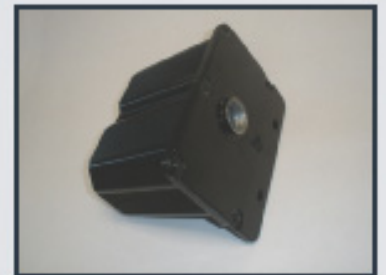
COMPLEX ASSEMBLIES

- Multi-component assemblies
- Welded assemblies
- Powder coated & plated assemblies
- Finished products



CASTINGS

- Sand
- Die
- Investment
- Steel
- Secondary Machining
- Stainless
- Alloys
- Brass
- Non-ferrous



Soule, Blake and Wechsler, Inc : 180 Harvard Avenue : Stamford, CT 06902 : USA : 1-800-450-4679
 www.sbwusa.com : sales@sbwusa.com



Manufacturer of Custom Engineered Components

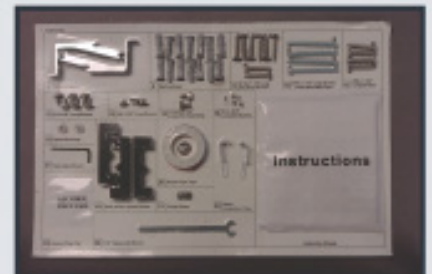
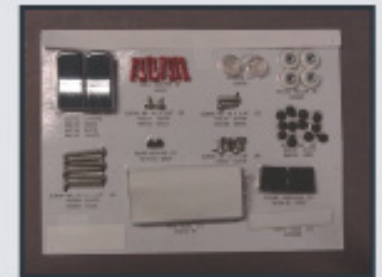
PLASTICS

- Blow
- Extrusion
- Rotational
- Injection molding
- Over molded / inserts
- Multi-cavity
- Low tooling cost



SKINBOARDS

- Zero PPM
- Multi-components
- Manuals / instructions
- Consolidated vendor / reduced sku



Soule, Blake and Wechsler, Inc : 180 Harvard Avenue : Stamford, CT 06902 : USA : 1-800-450-4679
 www.sbwusa.com : sales@sbwusa.com



PART PROCESS IMPROVEMENT



MULTIPLE VENDORS VS. SINGLE VENDOR



WELDMENT VS. CASTING

TESTING

- FARO ARM (CMM)
- SALT SPRAY CABINET
- ELECTRONIC THICKNESS GAUGE
- TENSILE TESTER
- ROCKWELL HARDNESS TESTER
- MICRO HARDNESS TESTER
- MICROMETERS
- CALLIPERS
- ELECTRONIC SCALES
- PLATFORM BALANCES
- THREAD GAUGES

QUALITY

- ISO 9001:2000
- 5'S LEAN MANUFACTURING
- FIT, FORM & FUNCTION
- JIGS & FIXTURES
- SAMPLES AND DIMENSIONAL INSPECTION REPORTS
- PPAP LEVELS I, II & III

